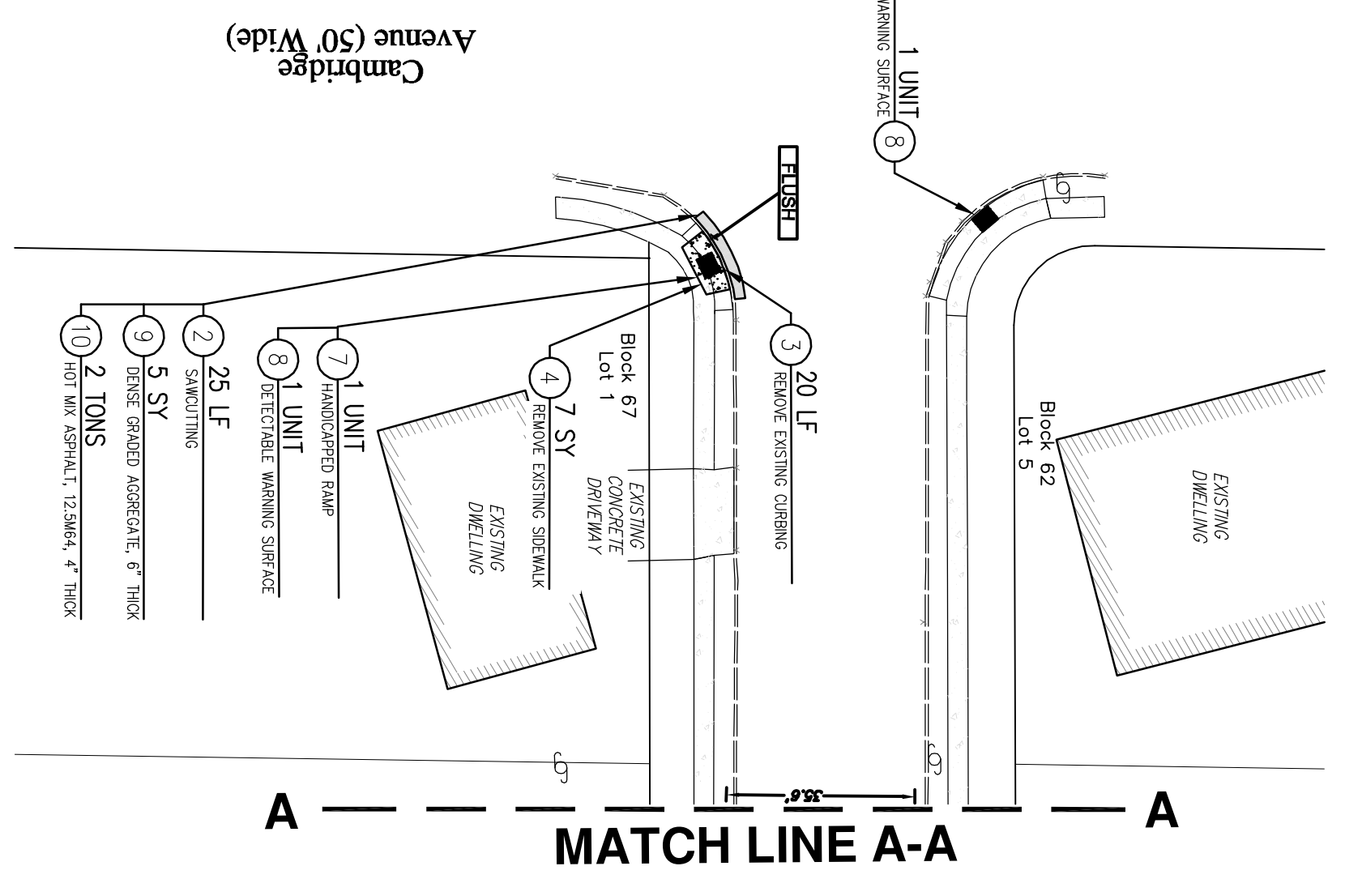
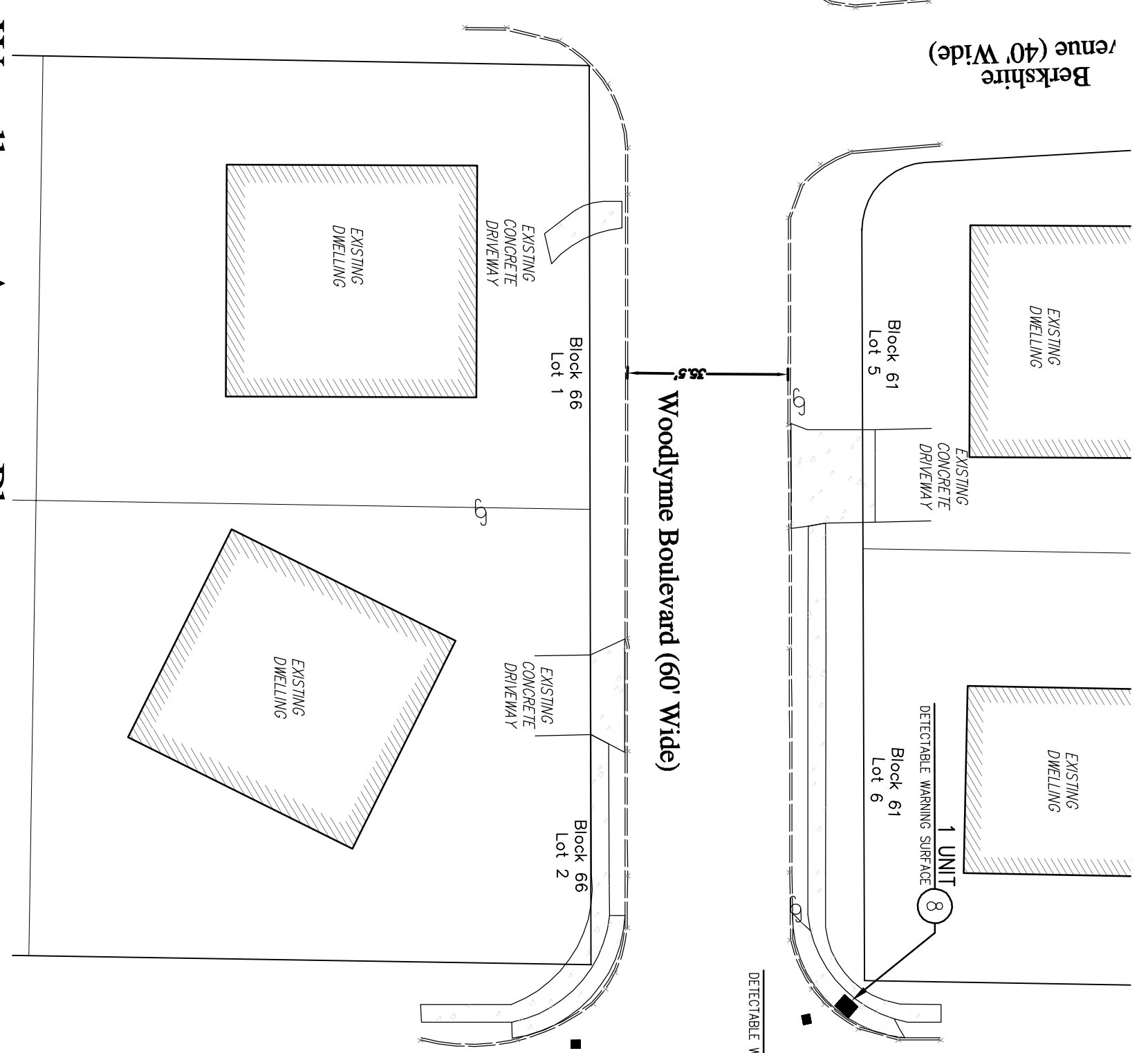
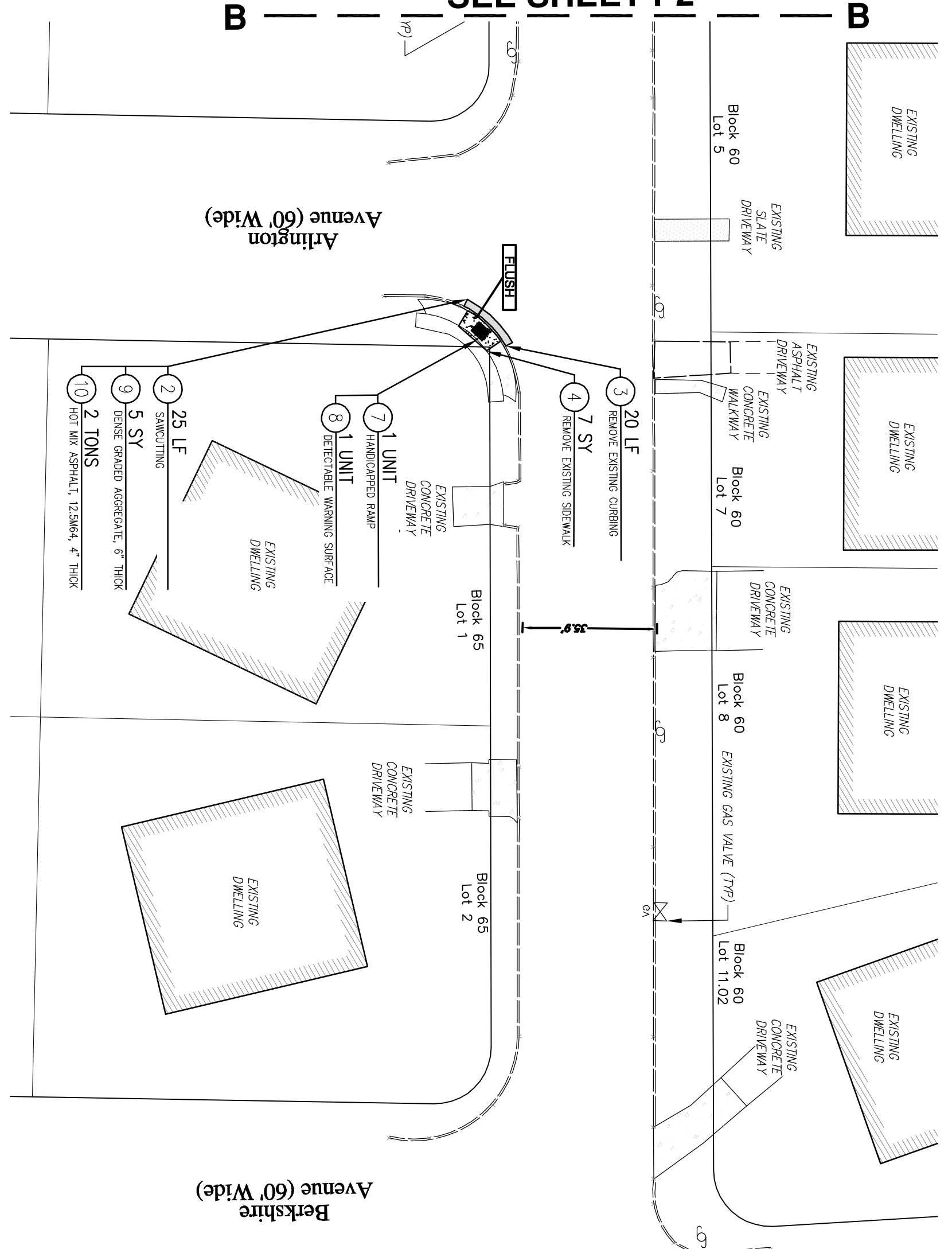
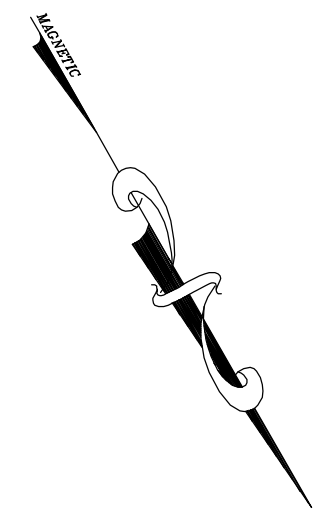
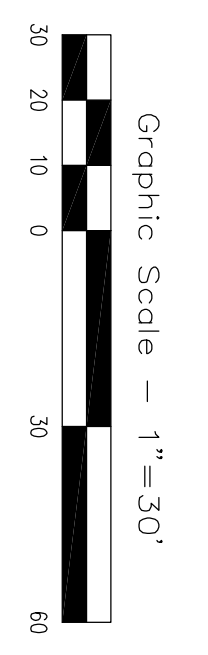


**MATCH LINE B-B  
SEE SHEET P2**



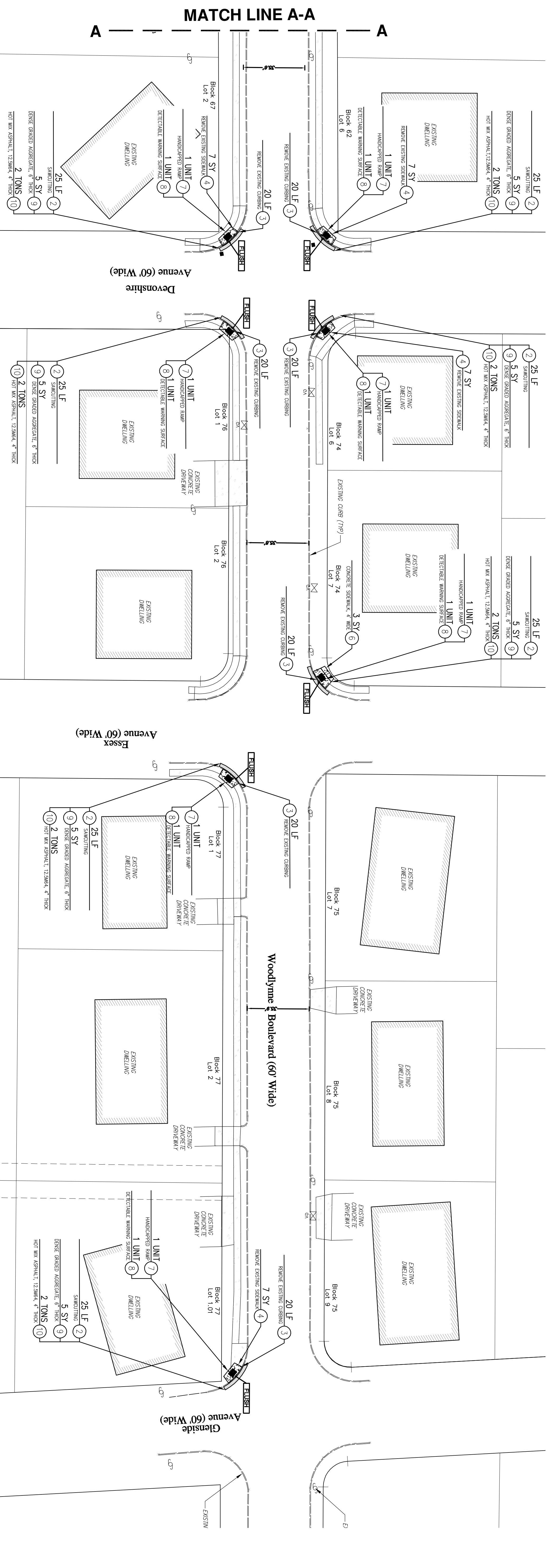
**MATCH LINE A-A**

Item	Description	Unit	Contract Quantity	Quantity This Sheet	As-Built Quantity
1	Marking & Signs	L.S.	475	225	-
2	Saw cutting	L.F.	330	130	-
3	Remove Existing Curbing	S.Y.	119	42	-
4	Remove Existing Slab w/ sk	S.Y.	25	0	-
5	Concrete Slab w/ 4' Wide	S.Y.	20	3	-
6	Concrete Slab w/ 4' Wide	UNIT	20	9	-
7	Handicapped Warning Surface	S.Y.	24	11	-
8	Detachable Warning Surface	TON	95	45	-
9	Detachable Warning Aggregate, 6" Thick & Warning Delineated	TON	38	18	-
10	Hot Mix Asphalt, 12.5% Surface Course, 4" Thick	S.Y.	230	150	-
11	Hot Mix Asphalt, 12.5% Base, 4" Thick	L.S.	1	0	-
12	Final Price Adjustment	L.S.	1	0	-
13	Final Price Adjustment	L.S.	1	0	-
14	Asphalt Price Adjustment	L.S.	1	0	-

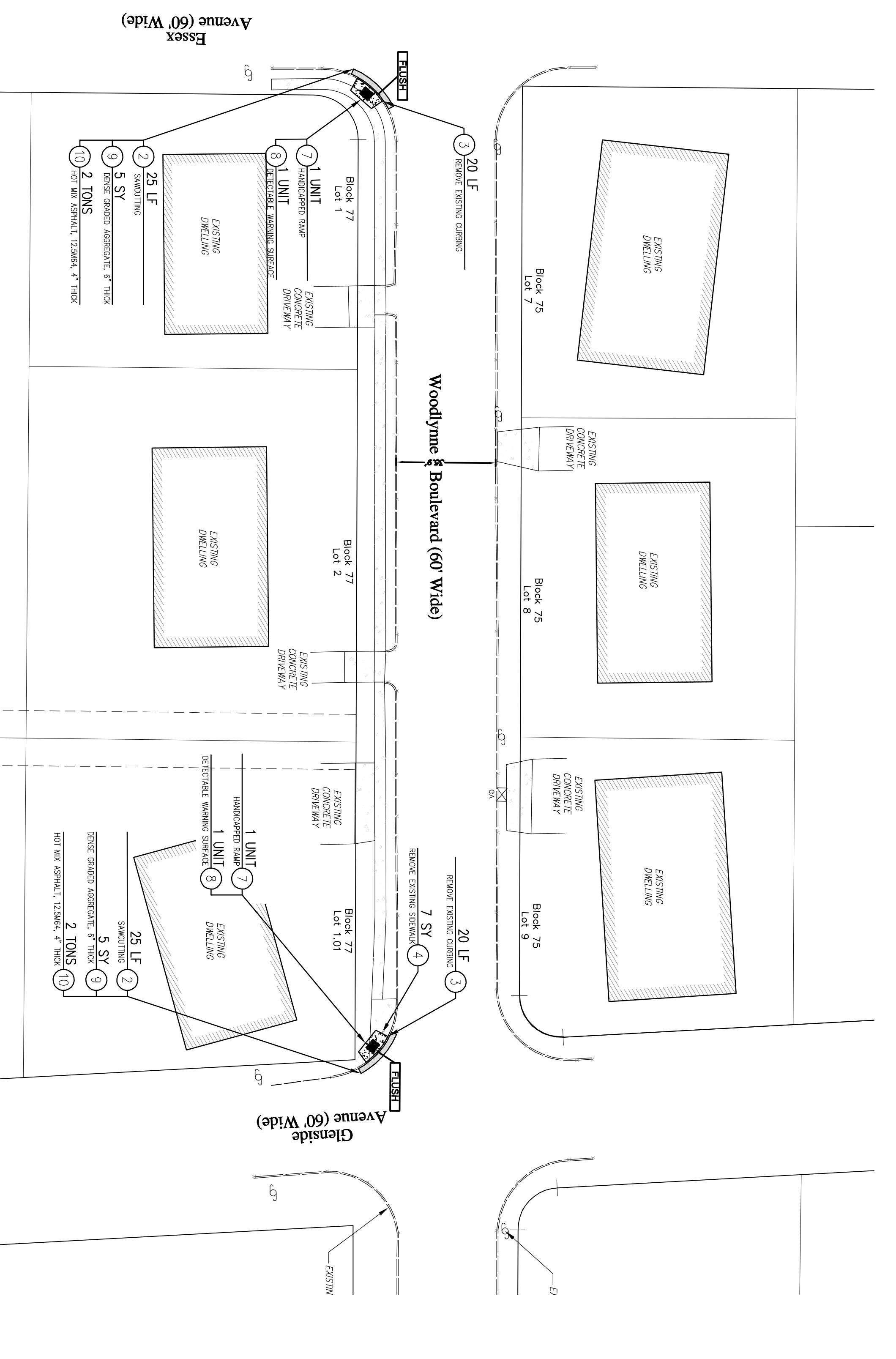
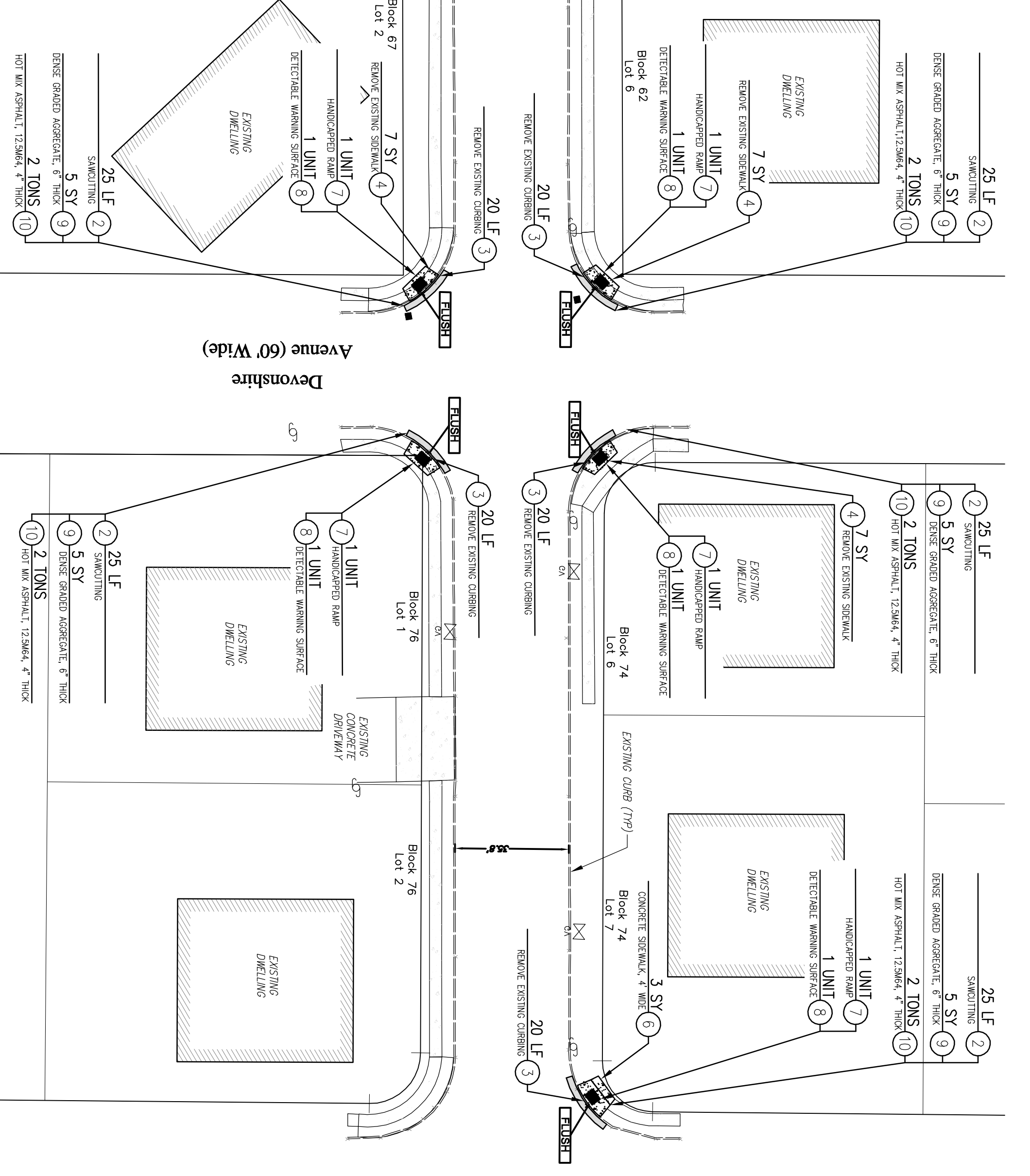


**Woodlyne Avenue - Plan**  
Scale: 1"=30'

**Woodlyne Avenue - Plan**  
Scale: 1"=30'



**MATCH LINE A-A**



City of Linwood  
Atlantic County, New Jersey  
**CDGB Funding 2014**  
Contract No. 5  
Woodlyne Boulevard - Plan

**POLISTINA**  
Associates, LLC  
Engineers & Planners  
6684 Washington Avenue  
Egg Harbor Township, NJ 08234  
Phone: (609) 646-2950  
State Board of Professional Engineers & Land Surveyors  
Certificate of Authorization No. 24GA20091200

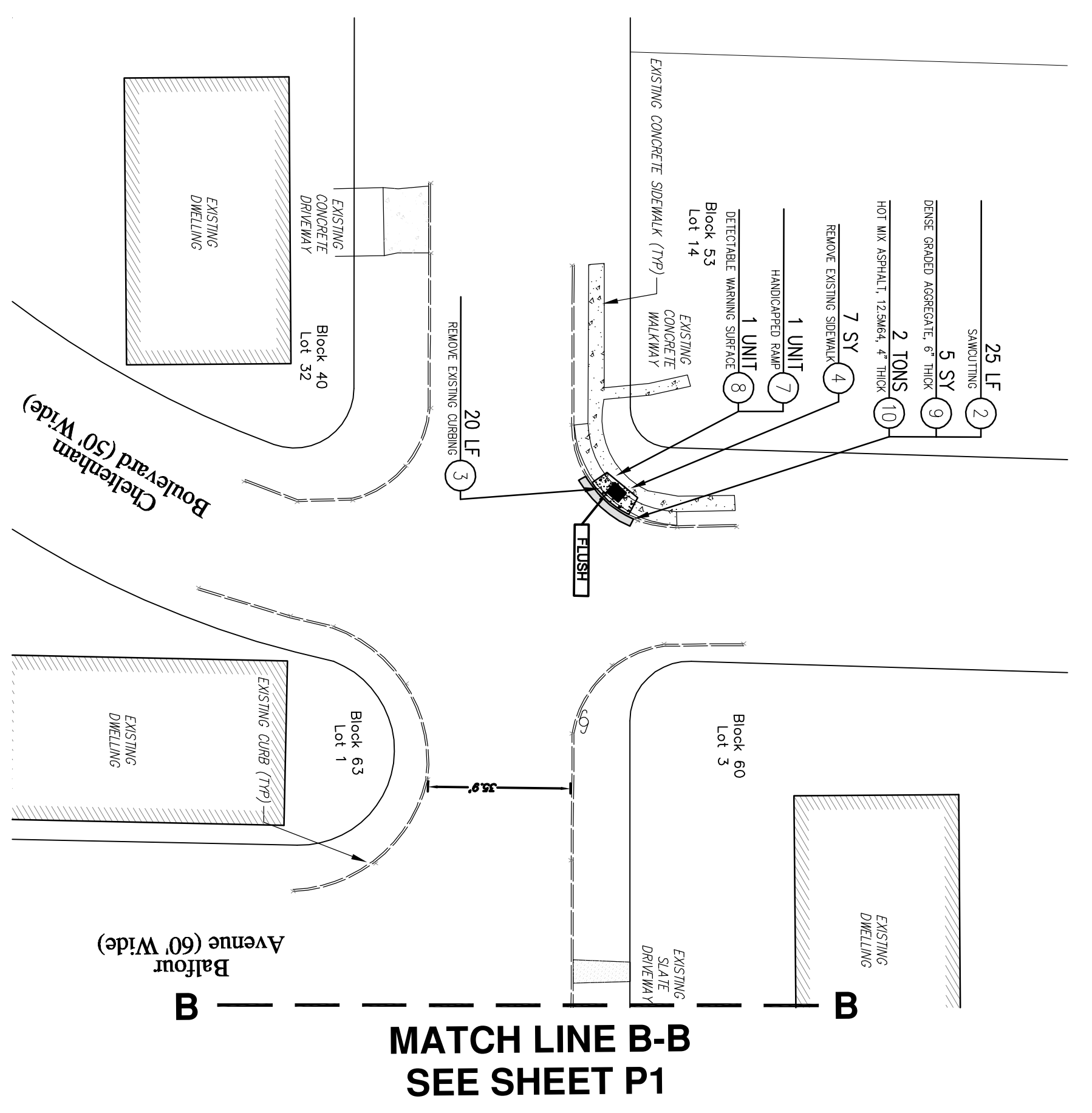
**Vincent J. Polistina**  
Professional Engineer  
New Jersey License No. 41978

Date	Revision	By
Designed SJA	Checked VJP	Approved VJP
Drawn SJA	Approved VJP	Date 12/4/14

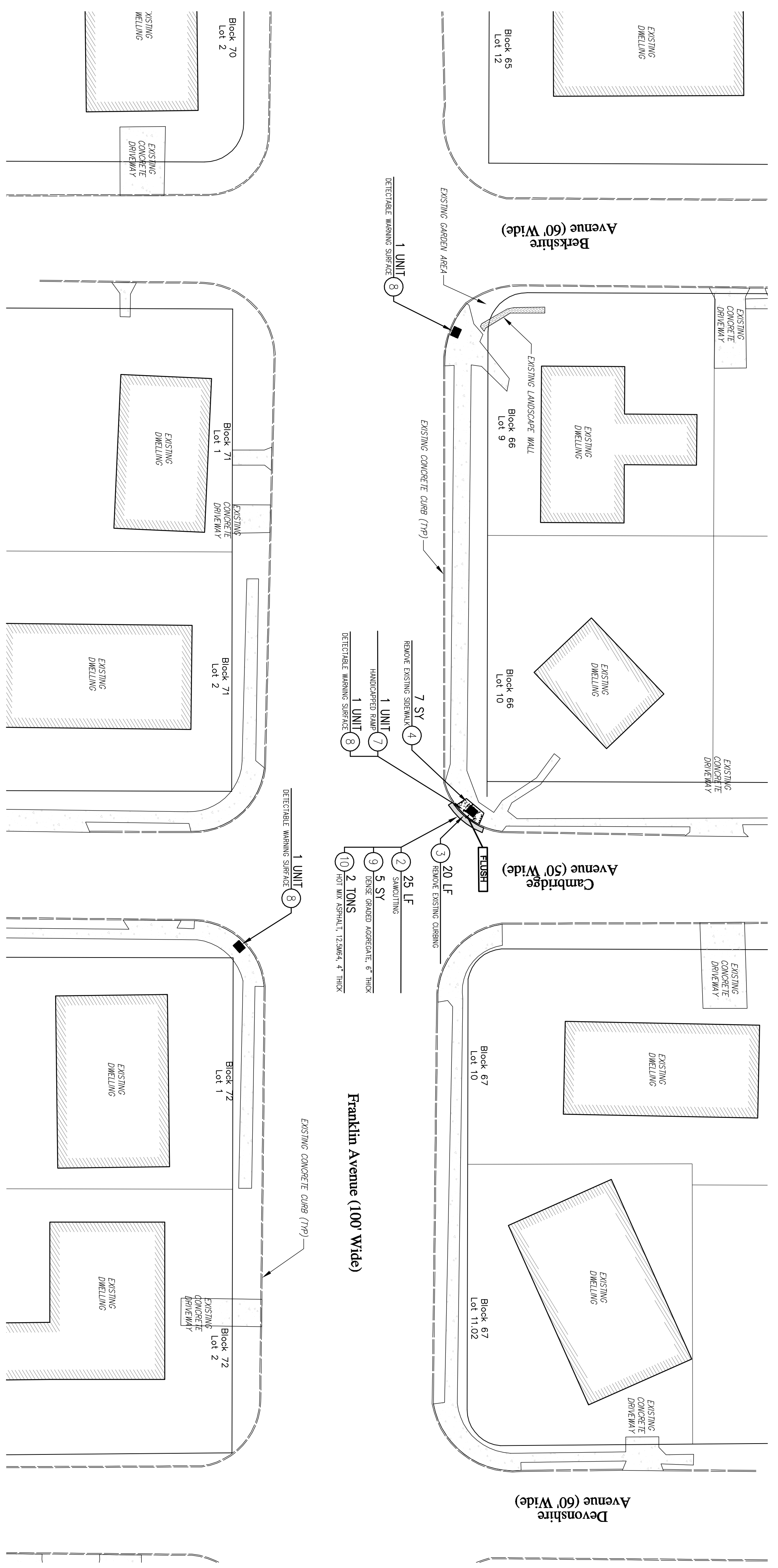
Job No. 7500.02  
Sheet No. P1  
Order Total 2  
5







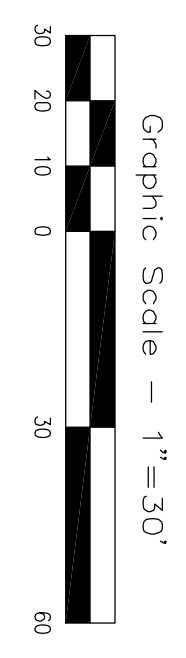
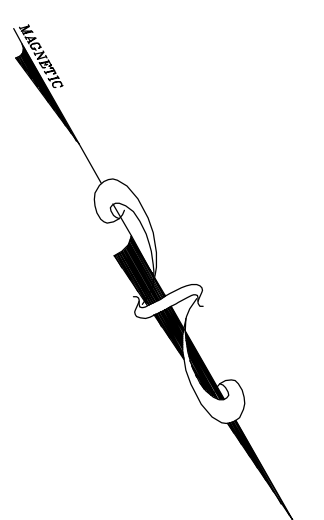
**Woodlyne Avenue - Plan**  
Scale: 1"=30'



**Franklin Avenue - Plan**  
Scale: 1"=30'

**MATCH LINE B-B  
SEE SHEET P1**

Item	Description	Unit	Contract Quantity	This Sheet Quantity	As-Built Quantity
1	Installation & Permit	LS	1	1	-
2	Stitching	LF	475	50	-
3	Remove Existing Curb	LF	380	40	-
4	Remove Existing Sidewalk	SY	119	14	-
5	Concrete Curb	LF	25	0	-
6	Concrete Sidewalk, 4" Wide	SY	20	0	-
7	Handicapped Ramp	UNIT	20	2	-
8	Detectable Warning Surface, 6" Thick, 1' x 1' & Where Directed	SY	95	10	-
9	Open Graded Aggregate, 6" Thick, 1' x 1' & Where Directed	TON	38	4	-
10	Hot Mix Asphalt, 12" Stock Surface Course, 4" Thick	SY	20	0	-
11	Hot Mix Asphalt, 12" Stock Surface Course, 4" Thick	SY	20	0	-
12	Final Price Adjustment	LS	1	0	-
13	Final Price Adjustment	LS	1	0	-
14	Asphalt Price Adjustment	LS	1	0	-



City of Linwood  
Atlantic County, New Jersey  
**CDGB Funding 2014**  
Contract No. 5  
Woodlyne Boulevard & Franklin Avenue - Plan

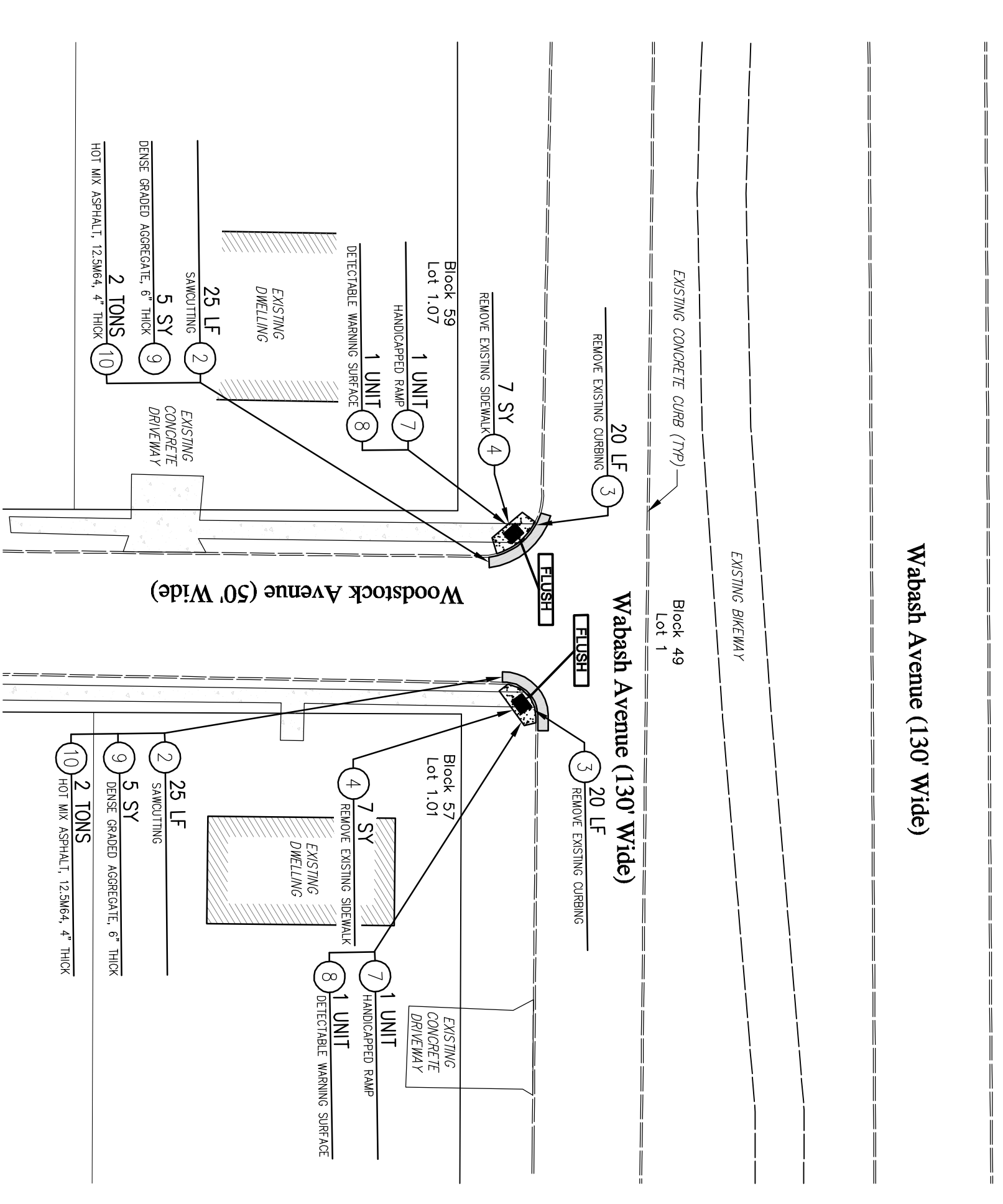
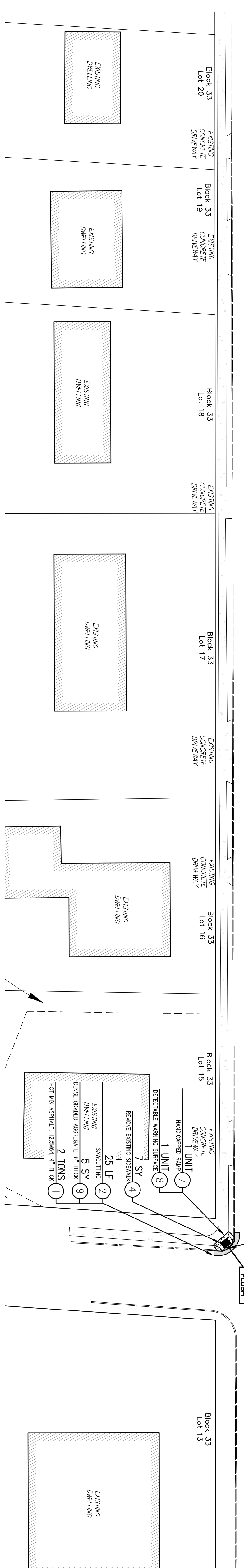
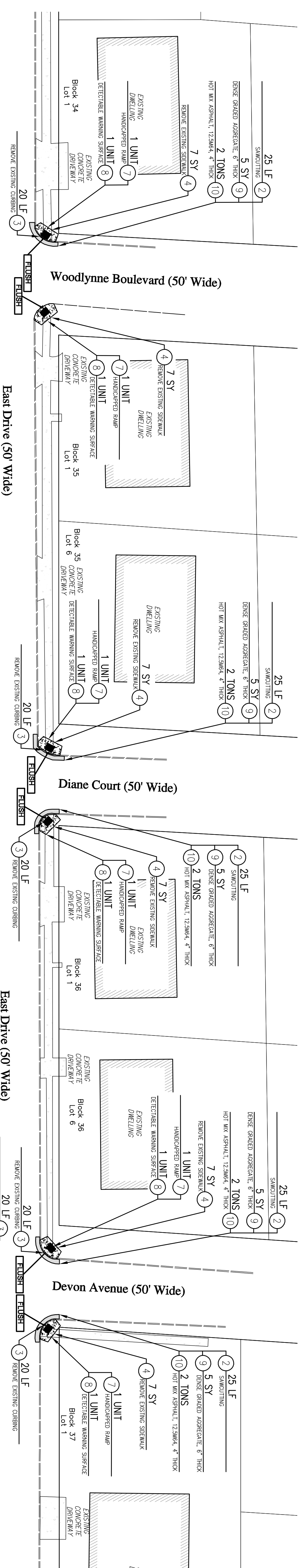
**POLISTINA**  
Associates, LLC  
Engineers & Planners  
6684 Washington Avenue  
Egg Harbor Township, NJ 08234  
Phone: (609) 646-2950  
State Board of Professional Engineers & Land Surveyors  
Certificate of Authorization No. 24GA28091200

**Vincent J. Polistina**  
Professional Engineer  
New Jersey License No. 41978  
Date \_\_\_\_\_

Date	Revision	By
Designed	Checked	Approved
SJA	VJP	VJP
Drawn	Approved	Date
SJA	VJP	12/4/14

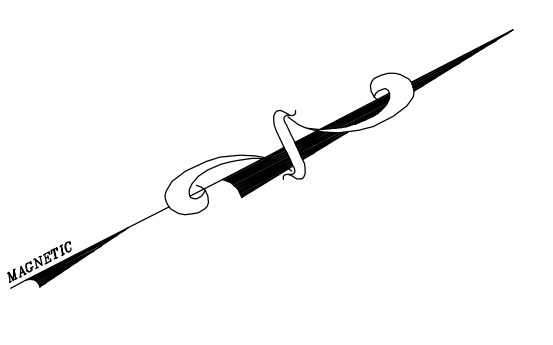
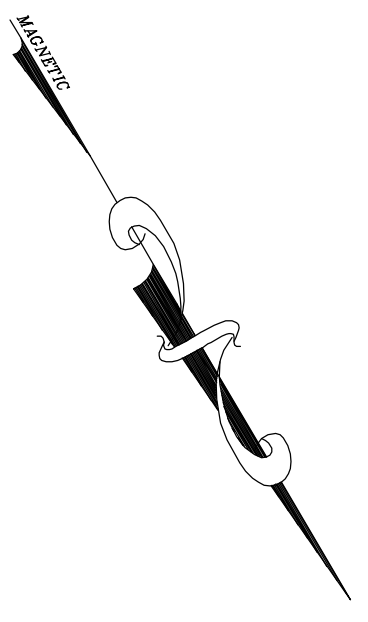
Job No.	7500.02
Sheet No.	P2
Order Total	3
	5





**Wabash Avenue - Plan**

Scale: 1"=30'



Item	Description	U/I	Contract Quantity	Quantity This Sheet	A-S-Built Quantity
1	Notification & Permits	LS	1	1	-
2	Site Clearing	LF	493	200	-
3	Remove Existing Curbing	LF	380	180	-
4	Remove Existing Shoulder	LF	12	0	-
5	Concrete Shoulder 18" Thick	LF	26	0	-
6	Concrete Shoulder 4" Thick	LF	20	0	-
7	Hand-dropped Ramp	UNIT	24	9	-
8	Detectable Warning Surface	UNIT	96	40	-
9	Dense Graded Aggregate 6" Thick if Elsewhere Creted	SY	290	18	-
10	Hot Mix Asphalt 12.5% 4" Surface Course 4" Thick	SY	290	100	-
11	Top Soil Fertilize & Seed	SY	1	0	-
12	Traffic Control	LS	1	0	-
13	Final Price Adjustment	LS	1	0	-
14	Asphalt Price Adjustment	LS	1	0	-

